

HeliosBox

Self-ballasted structure

Cost-effective, adaptable, robust and certified.

— Designed for your profitability

HeliosBox combines simplicity, speed and flexibility. Thanks to an intuitive mounting and a design adapted for flat roofs and ground mounts, HeliosBox is suitable for projects of all sizes. This saves you time and controls your costs at every stage of your installations

With premium design and durable materials, the structure ensures reliable performance even in the most demanding environments.

- ✓ Competitive and quick to assemble
- ✓ Fastening on the long side
- ✓ Usable on all types of projects
- ✓ Laboratory and wind tunnel tested



Patent filed



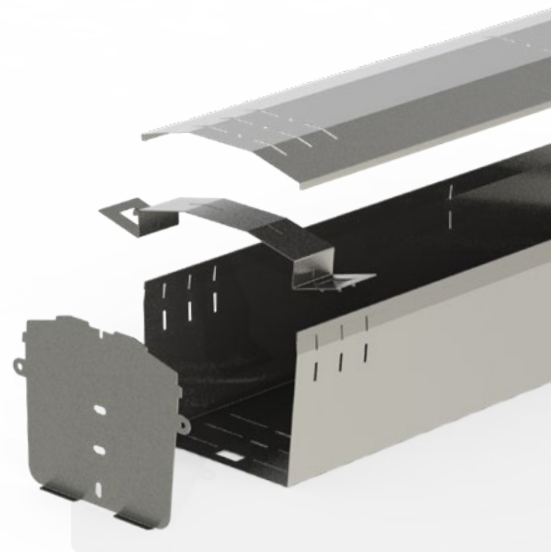
Metal structure
100 % recyclable



ETN certification
for the French market

Contact us :

- +339 81 73 92 76
- info@HeliosLite.com




A photograph showing a flat roof installation with solar panels. The roof is covered with gravel, and there are green patches of vegetation. The solar panels are mounted on a structure that allows for a gravel and green roof.

Gravel and green flat roof

A photograph showing a close-up view of solar panels mounted on a ground-mounted structure. The panels are dark blue and arranged in rows.

Ground-mounted

A photograph showing a flat roof installation with solar panels. The roof is covered with a dark membrane, and the solar panels are mounted on a structure that allows for a membrane flat roof.

Membrane flat roof

— Versatility and durability

With an **ETN certification** to meet the requirements of the French market, HeliosBox combines mechanical strength and versatility. Ideal for flat rooftops or ground projects, this structure is suitable for industrial and agricultural installations, as well as residential projects.

— Optimized for your project

No rails, no long parts to handle, no cutting required. With a compact and efficient packaging, you reduce your logistics costs and speed up the implementation of your systems. The gravel available on site is used to ballast the HeliosBoxes.

🔌 On-line layout tool

With our configurator, you determine the best layout and calculate the quantity of ballast required for your projects, while optimizing the design and procurement process.

✓ Adaptable to all your projects

✓ Reduced logistic costs

✓ Clip-on assembly

✓ No cutting on site

✓ Customized technical support

Data sheet

