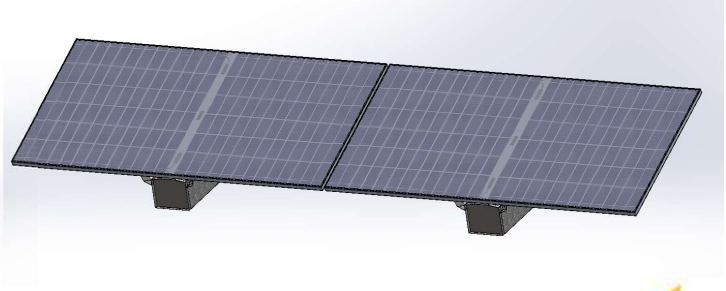


East-West version inclined at 15°

South tilt version inclined at 20°



MADE IN FRANCE



METAL STRUCTURE



100% RECYCLABLE

PATENTED DESIGN



A new product distributed
for professional installers by:

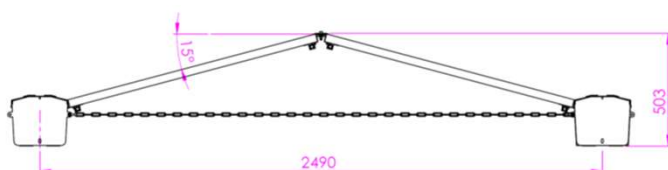
krannich
global solar distribution

HeliosBox description

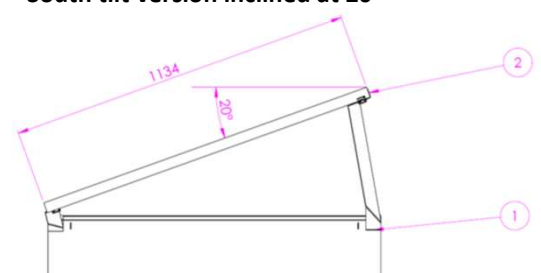
Structure type	East-West or South tilt ballasted PV structure for rooftop or ground mounted solar plants
PV panels compatibility	Width : 0.95 to 1.2m, Length : 1.5 to 2.4m
PV panels inclination angle	South tilt : 20° (lower inclination available on request), East-West : 15°
PV panels mounting clip	ARaymond PowAR Snap S+ or ARaymond PowAR Cinch
Structure material	High corrosion resistance Magnelis-type steel , 100% recyclable
HeliosBox dimensions (LxWxH)	1150 x 230 x 220 mm
HeliosBox internal volume	55 L
HeliosBox maximum ballast weight	~80 kg with gravel (density = 1.5)
Maximum wind speed	System compatible with installations in class 4 exposure zones (Vref=28 m/s). For flat roof installations on buildings, get access to our professional configurator tool on HeliosLite website to calculate the mass of ballast required depending on the location of the site and the height of the building.
Maximum snow load	≤ 1,200 Pa
Structure UV exposure lifetime	Infinite, no risk of generation of plastic particles under long term aging
Material flammability	Non-flammable metallic structure
Grounding	ARaymond fixing clips provide ground continuity between the frames of the panels and the fixing flanges of the HeliosBoxes
Codes & standards	Structure and ballast weights dimensioned by wind tunnel tests according to the Eurocodes standard EN 1991-1-4. Independent certification by an inspection office (ETN) for rooftop installations. Structure mechanical resistance verified by laboratory load tests.
Warranties	Corrosion resistance of the structure guaranteed by certificates from steel manufacturer. 30-year guarantee on the mechanical resistance of the structure.

HeliosBox structure main dimensions

East-West version inclined at 15°



South tilt version inclined at 20°



About HeliosLite

Since 2013, HéliosLite has been designing complete and patented photovoltaic support structures that integrate technologies resulting from the R&D work carried out by its engineers.

Product installation manuals and videos available on www.helioslite.com